

STANDARD-GELENKKÖPFE
Mit fixiertem Gleitlager, Maßreihe E, Innengewinde, Anschlussmaße nach DIN ISO 12240-4

STANDARD-ROD ENDS
 With pressed spherical-plain bearing, series E, female thread, according to DIN ISO 12240-4

→ **Sonderanfertigungen auf Anfrage**
 → Custom made products on request

Gehäuse:

Vergütungsstahl, Oberfläche galvanisch verzinkt, Cr VI-frei

Außenring:

Vergütungsstahl, mit eingelegter Gleitfolie aus Bronze - PTFE - Verbundmaterial, optional mit beidseitiger -2RS -Abdichtung

Gelenkkugel:

Wälzlagerstahl gehärtet, geschliffen, poliert, bis Größe 12 Lauffläche hartverchromt, -2RS Ausführung alle Größen Lauffläche hartverchromt

Wartung:

Wartungsfrei

Toleranzen:

Seite 050 – 057

Housing:

Heat-treated steel, surface galvanized, free of Cr VI

Outer ring:

Heat-treated steel, hardened, single split, bonded with PTFE - fabric, optional with -2RS lip seals on both sides

Joint ball:

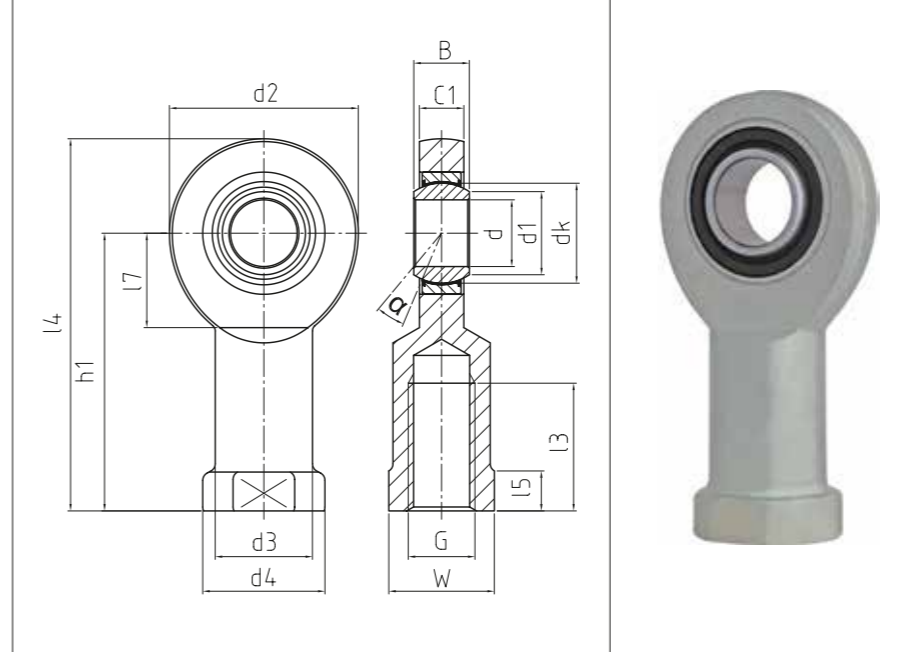
Ball bearing steel, hardened, ground, polished, up to size 12 hard chromium plated, -2RS version all sizes hard chromium plated

Maintenance:

Maintenance free

Tolerances:

Page 050 – 057



DGIR_UK (-2RS)

Standard-Gelenkköpfe
 Standard-rod ends

BASIC Line

| Bestellnummer Order number | | Abmessungen Measurements [mm] | | | | | | | | | | | | | | | | | Kippwinkel Tilt angle | Gewicht Weight | Tragzahlen Basic load rating | | Radiale Lagerluft Radial clearance | |
|--|--|----------------------------------|----|-----|------|-----|------|------------|----|-----|--|----|-------|-----|-----|-----|-----|-------|--------------------------|-------------------|---------------------------------|---------|---------------------------------------|--|
| Typ Type | | | | | | | | | | | | | | | | | | | | | | | | |
| Rechtsgewinde (DGIR) Right hand thread (DGIR) | Linksgewinde (DGIL) Left hand thread (DGIL) | d | d1 | d2 | d3 | d4 | dk | G | B | C1 | | l3 | l4 | l5 | l7 | W | h1 | a [°] | kg | dyn C [kN] | stat Co [kN] | CN [µm] | d | |
| DGIR / DGIL 06 UK | | 6 | 8 | 21 | 10 | 13 | 10 | M 6 | 6 | 4,4 | | 11 | 40,5 | 5 | 12 | 11 | 30 | 13 | 0,021 | 2,2 | 6,6 | 0 – 32 | 6 | |
| DGIR / DGIL 08 UK | | 8 | 10 | 24 | 12,5 | 16 | 13 | M 8 | 8 | 6 | | 15 | 48 | 5 | 14 | 14 | 36 | 15 | 0,039 | 3,5 | 10,3 | 0 – 32 | 8 | |
| DGIR / DGIL 10 UK | | 10 | 13 | 29 | 15 | 19 | 16 | M 10 | 9 | 7 | | 20 | 57,5 | 6,5 | 15 | 17 | 43 | 12 | 0,061 | 5,2 | 14,1 | 0 – 32 | 10 | |
| DGIR / DGIL 12 UK | | 12 | 15 | 34 | 17,5 | 22 | 18 | M 12 | 10 | 8 | | 23 | 67 | 6,5 | 18 | 19 | 50 | 11 | 0,096 | 8,4 | 19,6 | 0 – 32 | 12 | |
| DGIR / DGIL 15 UK | | 15 | 18 | 40 | 21 | 26 | 22 | M 14 | 12 | 10 | | 30 | 81 | 8 | 20 | 22 | 61 | 8 | 0,18 | 11,2 | 28,8 | 0 – 40 | 15 | |
| DGIR / DGIL 17 UK (-2RS) | | 17 | 20 | 46 | 24 | 30 | 25 | M 16 | 14 | 11 | | 34 | 90 | 10 | 23 | 27 | 67 | 10 | 0,22 | 13,4 | 36 | 0 – 40 | 17 | |
| DGIR / DGIL 20 UK (-2RS) | | 20 | 24 | 53 | 27,5 | 35 | 29 | M 20 x 1,5 | 16 | 13 | | 40 | 103,5 | 10 | 27 | 32 | 77 | 9 | 0,35 | 20,4 | 48 | 0 – 40 | 20 | |
| DGIR / DGIL 25 UK (-2RS) | | 25 | 29 | 64 | 33,5 | 42 | 35,5 | M 24 x 2 | 20 | 17 | | 48 | 126 | 12 | 32 | 36 | 94 | 7 | 0,64 | 36,5 | 66,4 | 0 – 50 | 25 | |
| DGIR / DGIL 30 UK (-2RS) | | 30 | 34 | 73 | 40 | 50 | 40,7 | M 30 x 2 | 22 | 19 | | 56 | 146,5 | 15 | 37 | 41 | 110 | 6 | 0,93 | 46,7 | 88 | 0 – 50 | 30 | |
| DGIR / DGIL 35 UK -2RS | | 35 | 39 | 82 | 47 | 58 | 47 | M 36 x 3 | 25 | 21 | | 60 | 166 | 15 | 42 | 50 | 125 | 6 | 1,3 | 60,3 | 116,8 | 0 – 50 | 35 | |
| DGIR / DGIL 40 UK -2RS | | 40 | 45 | 92 | 52 | 65 | 53 | M 39 x 3 | 28 | 23 | | 65 | 188 | 18 | 48 | 55 | 142 | 7 | 2 | 70,6 | 144 | 0 – 60 | 40 | |
| DGIR / DGIL 45 UK -2RS | | 45 | 50 | 102 | 58 | 70 | 60 | M 42 x 3 | 32 | 27 | | 65 | 196 | 20 | 52 | 60 | 145 | 7 | 2,5 | 92,7 | 192 | 0 – 60 | 45 | |
| DGIR / DGIL 50 UK -2RS | | 50 | 55 | 112 | 62 | 75 | 66 | M 45 x 3 | 35 | 30 | | 68 | 216 | 20 | 60 | 65 | 160 | 6 | 3,5 | 112 | 232 | 0 – 60 | 50 | |
| DGIR / DGIL 60 UK -2RS | | 60 | 66 | 135 | 70 | 88 | 80 | M 52 x 3 | 44 | 38 | | 70 | 175 | 20 | 75 | 70 | 175 | 6 | 5,5 | 185,3 | 360 | 0 – 60 | 60 | |
| DGIR / DGIL 70 UK -2RS | | 70 | 77 | 160 | 80 | 98 | 92 | M 56 x 4 | 49 | 42 | | 80 | 200 | 20 | 87 | 85 | 200 | 6 | 8,6 | 221,3 | 488 | 0 – 72 | 70 | |
| DGIR / DGIL 80 UK -2RS | | 80 | 89 | 180 | 95 | 110 | 105 | M 64 x 4 | 55 | 47 | | 85 | 230 | 25 | 100 | 100 | 230 | 6 | 12 | 287,6 | 600 | 0 – 72 | 80 | |