

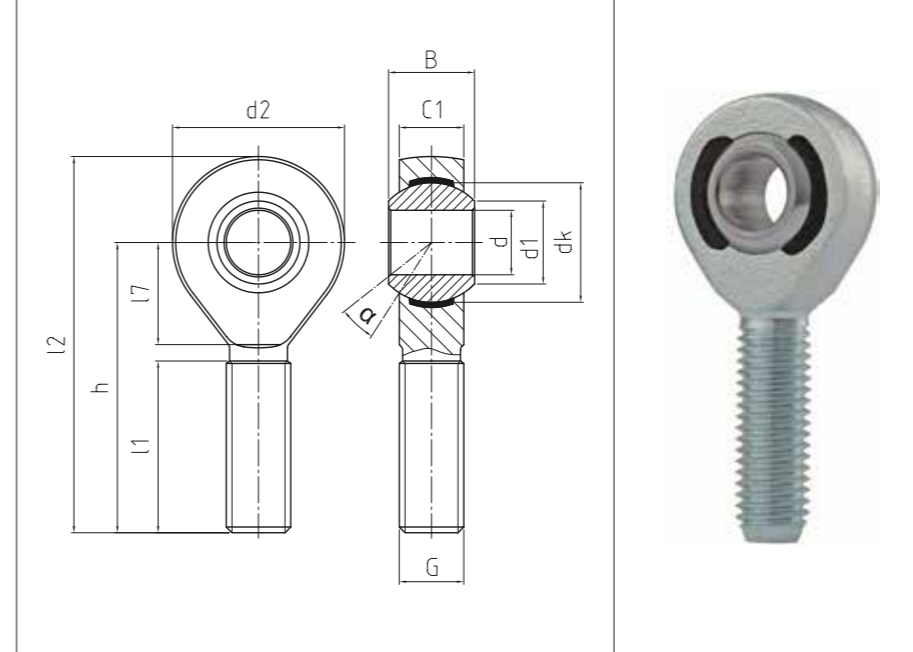
HOCHLEISTUNGS-GELENKKÖPFE
Mit integrierter Gleitlagerung,
Außengewinde, Abmessungen in
Zoll

HEAVY-DUTY ROD ENDS
 With integral spherical-plain
 bearing, male thread, dimensions
 in inches

→ **Sonderanfertigungen auf Anfrage**
 → Custom made products on request

Gehäuse:
 Geschmiedeter Einsatzstahl, vergütet,
 Gewinde gerollt, Oberfläche galvanisch ver-
 zinkt, Cr VI-frei
Lagerschale DURBAL-Glide:
 Polyamid-PTFE-Glasfaser-Compound
Gelenkkugel:
 Wälzlagerstahl, gehärtet, geschliffen, poliert,
 Lauffläche hartverchromt
Wartung:
 Wartungsfrei
Toleranzen:
 Seite 050 – 057

Housing:
 Forged steel, tempered, rolled thread, surface
 galvanized, free of Cr VI
Race DURBAL-Glide:
 Polyamid-PTFE-fibreglass-Compound
Joint ball:
 Ball bearing steel, hardened, ground,
 polished and hard chromium plated
Maintenance:
 Maintenance-free
Tolerances:
 Page 050 – 057



BEM^{ZOLL}

Hochleistungs-Gelenkköpfe
 Heavy-duty rod ends

CLASSIC Line **X**

| Bestellnummer Order number | | | Abmessungen [Zoll] Measurements [inches] | | | | | | | | | Kippwinkel Tilt angle | Gewicht Weight | Tragzahlen Basic load rating | | Radiale Lagerluft Radial clearance | | | |
|-------------------------------|------------------------------------|----------------------------------|---|--------------|-------|------|-------|-------|-------|-------|-------|--------------------------|-------------------|---------------------------------|-------|---------------------------------------|--------------|---------|--------------|
| Typ Type | Rechtsgewinde Right hand thread | Linksgewinde Left hand thread | d | G | B | C1 | h | d1 | d2 | dk | l1 | l2 | l7 | α [°] | [kg] | dyn C [kN] | stat Co [kN] | CN [µm] | d |
| BEM 1/4 - 20 | -501 | -502 | .250 | 1/4 - 28 UNF | .374 | .283 | 1.594 | .374 | .750 | .516 | 1.000 | 1.969 | .511 | 13 | 0,022 | 3,6 | 13,5 | 0 - 10 | .250 |
| BEM 3/8 - 20 | -501 | -502 | .375 | 3/8 - 24 UNF | .499 | .405 | 1.948 | .537 | 1.000 | .719 | 1.240 | 2.448 | .629 | 9,5 | 0,049 | 7,7 | 21 | 0 - 10 | .375 |
| BEM 1/2 - 20 | -501 | -502 | .500 | 1/2 - 20 UNF | .624 | .472 | 2.460 | .632 | 1.311 | .876 | 1.500 | 3.116 | .846 | 13 | 0,109 | 14,7 | 40,3 | 0 - 10 | .500 |
| BEM 5/8 - 20 | -501 | -502 | .625 | 5/8 - 18 UNF | .827 | .590 | 2.618 | .782 | 1.654 | 1.125 | 1.574 | 3.445 | .944 | 15,5 | 0,202 | 22,4 | 56 | 0 - 10 | .625 |
| BEM 3/4 - 20 | -501 | -502 | .750 | 3/4 - 16 UNF | .874 | .688 | 2.893 | .913 | 1.750 | 1.249 | 1.750 | 3.768 | 1.023 | 11 | 0,249 | 24,9 | 62,2 | 0 - 10 | .750 |
| BEM 1/1 - 20 | -501 | -502 | 1.000 | 1/1 - 12 UNF | 1.220 | .866 | 3.720 | 1.185 | 2.362 | 1.688 | 2.244 | 4.901 | 1.200 | 15,5 | 0,562 | 45,4 | 113,38 | 0 - 10 | 1.000 |
| BEM 1/1 - 21 | -501 | -502 | 1.000 | 1/1 - 14 UNS | 1.220 | .866 | 3.720 | 1.185 | 2.362 | 1.688 | 2.244 | 4.901 | 1.200 | 15,5 | 0,562 | 45,4 | 113,38 | 0 - 10 | 1.000 |