



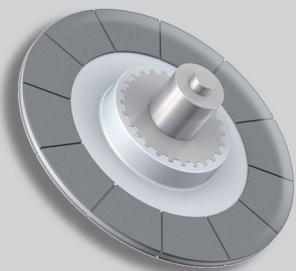
BREMSKERL

Der Spezialist für Brems- und Kupplungsbeläge
The specialist for brake and clutch linings



BREMSKERL 9017

For efficient and reliable functioning of your pitch and rotor brakes, we recommend the use of our premium quality **BREMSKERL 9017**.



YOUR BENEFITS

- High quality.
- Long service life.
- Reduced maintenance and repair effort.
- Very good price-performance ratio.
- High load capacity.
- Large variety of geometries.

THEREFORE BREMSKERL

- ✓ High strength.
- ✓ Very good thermal properties.
- ✓ Excellent friction properties.
- ✓ Low wear.
- ✓ Good outdoor properties.

BREMSKERL products are REACH and RoHS compliant, PfHS-free and benefit from more than 90 years of experience in the development and manufacture of brake and friction linings.

BREMSKERL your expert for friction technology!