



BREMSKERL

Der Spezialist für Brems- und Kupplungsbeläge
The specialist for brake and clutch linings

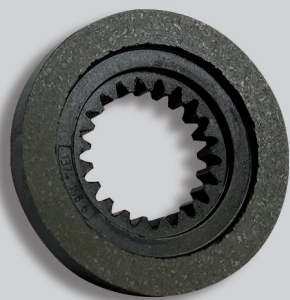


BK

4250

BREMSKERL 4250

To ensure efficient and reliable functioning of your brakes, we recommend the use of our Premium quality **BREMSKERL 4250**.



YOUR BENEFITS

- High quality.
- Long service life.
- Reduced maintenance and repair effort.
- Good price-performance ratio.
- Can be used without lining carrier.
- Wide range of geometries.

THEREFORE BREMSKERL

- ✓ High reversing strength.
- ✓ Low weight.
- ✓ Excellent friction properties.
- ✓ Low wear
- ✓ Good emergency stop properties.
- ✓ High thermal stability.

BREMSKERL products are REACH and RoHS compliant, PfHS-free and benefit from more than 90 years of experience in the development and manufacture of brake and friction linings.

BREMSKERL your expert for friction technology!

**BREMSKERL-REIBBELAGWERKE
EMMERLING GMBH & CO. KG**

☎ +49 (0) 5025 978-0
@ info@bremskerl.com
🌐 www.bremskerl.com



Management System
ISO 9001:2015
ISO 14001:2015
ISO 50001:2018
www.tuv.com
ID 0091005970

